

Optimally planned: ZARGES cabinet systems.



For operational and nursing areas: planning, coordination, processing and execution

► Spatial planning

We calculate the exact storage capacity needed on the basis of consumption analyses and design the storage facilities to meet the requirements with regard to hygiene and ergonomics.

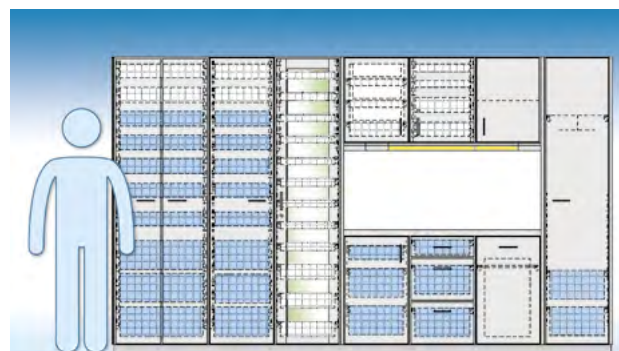
► Costing

Taking into account the existing storage capacities and all logistics processes, we determine and calculate the actual storage media requirements, both with regard to quantities and cost, and submit them for approval.

► Drafting and design

All materials and the design are individually coordinated and tailored to the requirements of your facility on the basis of the specific logistics processes there.

Where there are special requirements (fire protection, radiation protection etc.), we will find corresponding solutions while still ensuring optimised logistics planning.



► Schedule

We supervise the conversion measures and on request, coordinate the technical processes.

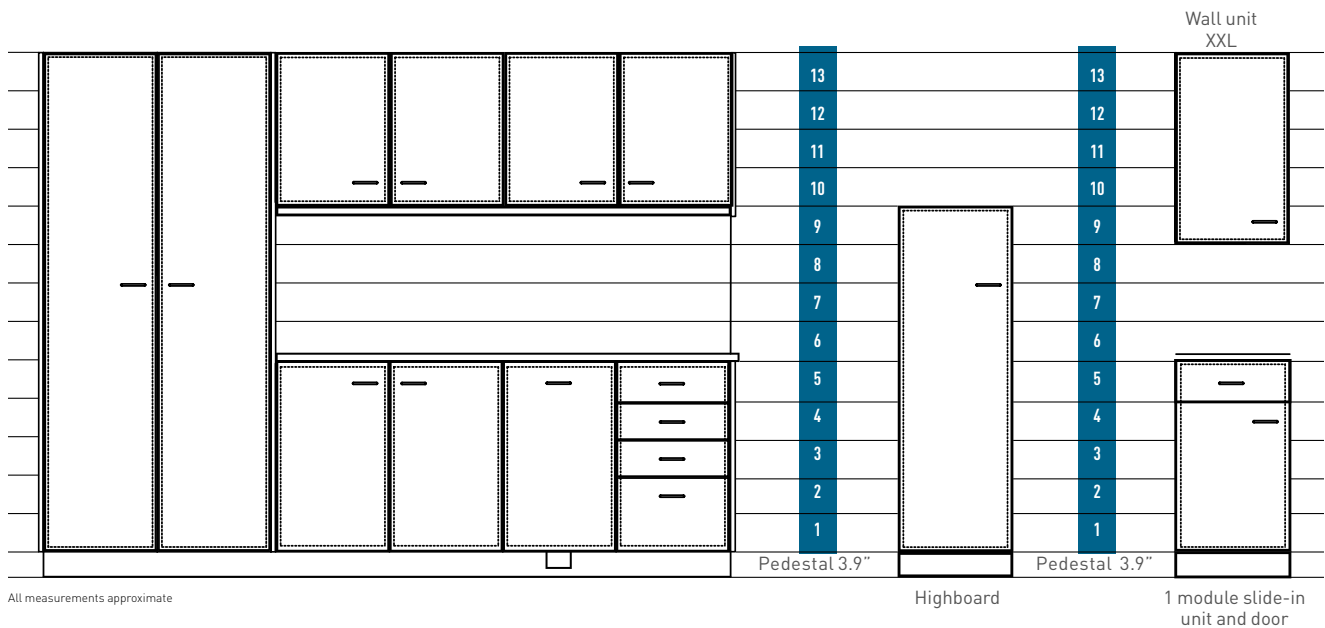
► Full equipment

If desired, we can not only supply the logistics equipment, but also design the entire working area in accordance with ergonomic principles.

► Service

Thanks to our international network of specialist dealers and partners, we are in a position to carry out all structural measures flexibly and in a timely manner. All standard furniture can be delivered at short notice. In the case of projects, delivery is completed to agreed deadlines.

ZARGES height units.



The ZARGES ISO modular cabinet are subdivided into height units (HE). 1 HE = 6.1 in. [154 mm].

These height units refer to the height of the cabinet body itself, while in the case of articles which stand on the floor, 3.9 in. must be added for the pedestal.

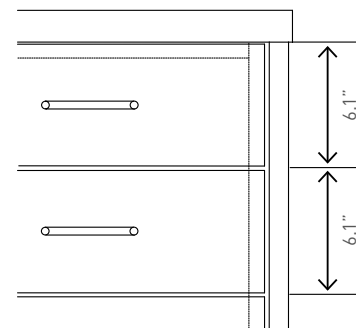
Advantages

- ▶ Individual cabinet configurations using the “ZARGES grid”.
- ▶ Reliable planning of the cabinet body heights.

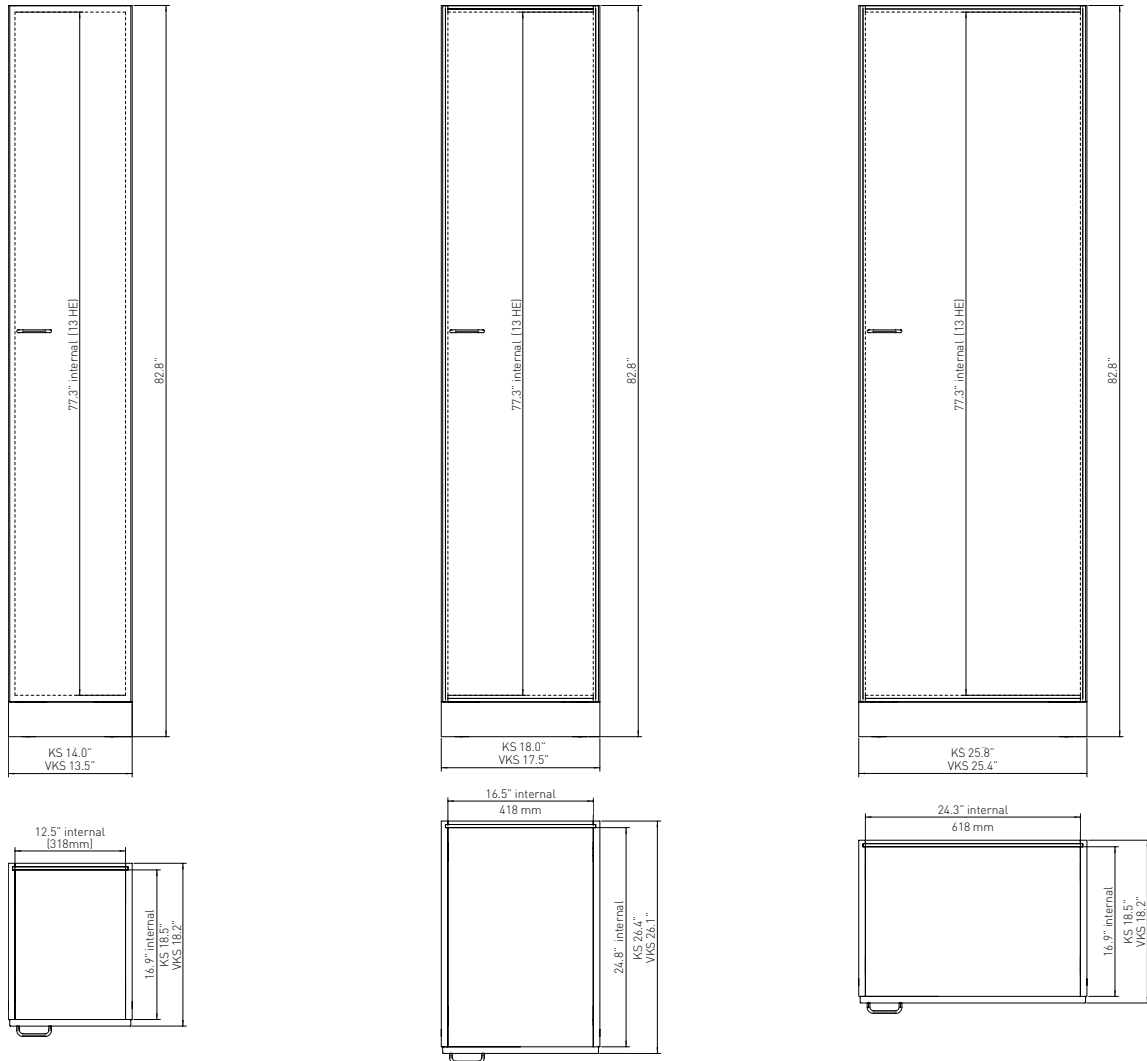
The ZARGES height units enable you to put together individual configurations of standard cabinets to comply with the specific requirements of the user.

Examples

- 1 HE = max. 3.9 in. [100mm] modular basket height
- 2 HE = max. 7.9 in. [200mm] modular basket height
- 3 HE = safes for anesthetics (BTMs)
- 4 HE = fitted medication freezer
- 5 HE = fitted medication refrigerator
- 9 HE = catheter racks for upright storage of catheters
- 11 HE = catheter drawer for suspended catheter storage



Tall cabinet.



Cupboard units 1: ISO tall cabinets

Available in wood (KS) and with plastic body (VKS) in ISO systems ISO 318, ISO 418 and ISO 618.

Designed to be equipped with ISO modules

- ▶ support walls.
- ▶ telescopic rails, fixed installation or on notched rails.

Available in versions

- ▶ open.
- ▶ door in KS or VKS.
- ▶ glass-framed door (ESG glass).
- ▶ aluminum and plastic rolling tambour doors.
- ▶ various locking systems possible.

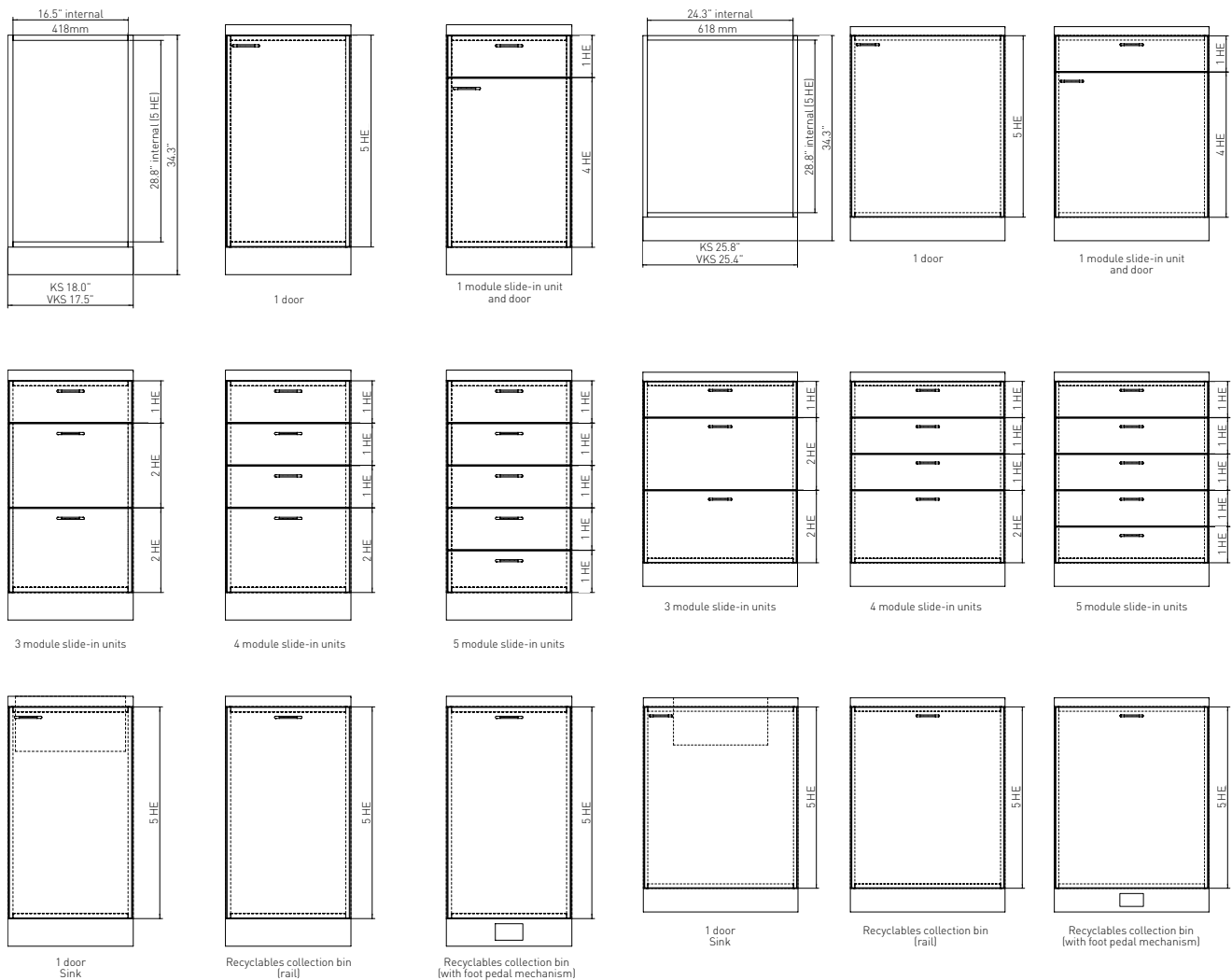
We design and produce tall cabinets with refrigerator systems or with integrated safes for anesthetics as well as in combination with our ISO modular system.

Abbreviations:

KS: plastic-coated

VKS: plastic

Base cabinets.



Cupboard units 2: ISO lower cabinets

Available with wood (KS) and plastic body (VKS) in ISO systems ISO 418 and ISO 618.

Designed to be equipped with ISO modules

- ▶ support walls.
- ▶ telescopic rails (fixed).
- ▶ module frame on telescopic rails (slide-in unit).
- ▶ notched rails.

Available with various fronts

- ▶ open.
- ▶ door in KS.
- ▶ door in VKS.
- ▶ aluminum glass-framed door (ESG glass).
- ▶ aluminum and plastic rolling tambour doors.

Lower cabinets, e.g. as refrigerator surrounds, are planned and manufactured individually by us to your specifications after selection of the electrical appliances.

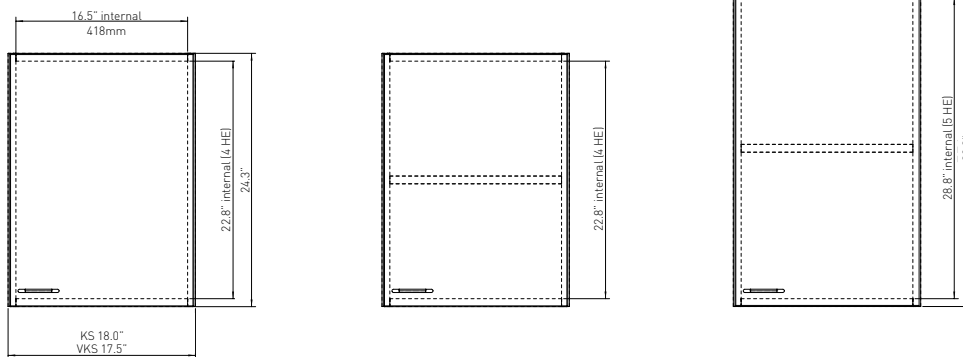
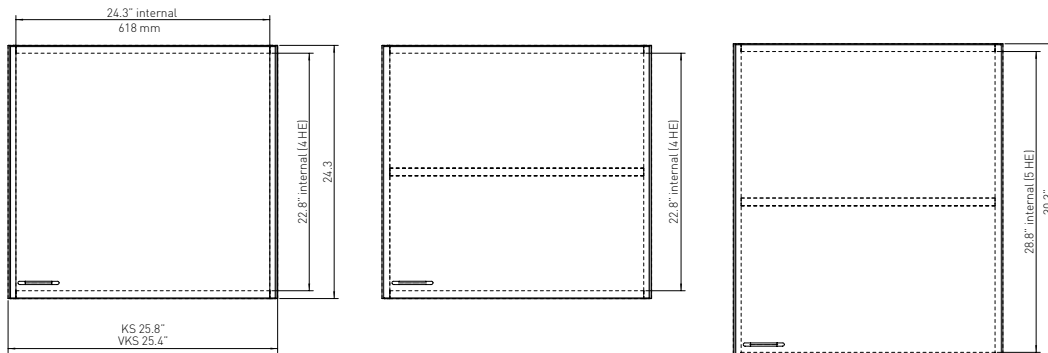
Lower cabinets are also available as:

- ▶ sink base units.
- ▶ lower cabinet recyclables collection system (with foot pedal mechanism).

All lower cabinets in ISO-618 width are also available with two doors.

All cupboards can be supplied with a variety of locking systems.

Wall units.



Cabinet units 3: ISO wall units

Available with wood (KS) and plastic body (VKS) in ISO systems ISO 418 and ISO 618.

Designed to be equipped with ISO modules

- ▶ support walls.

Available with various fronts:

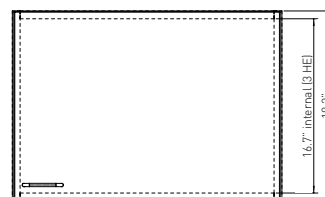
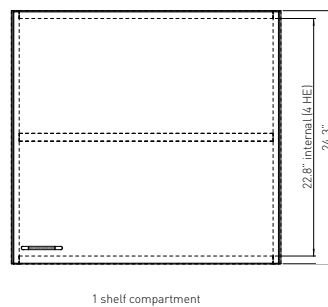
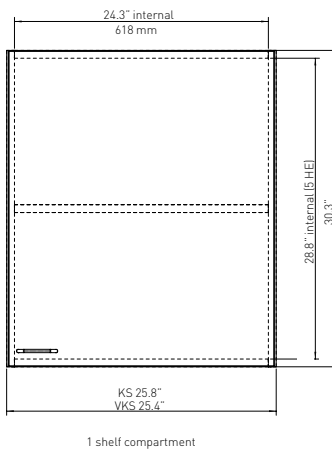
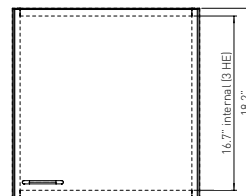
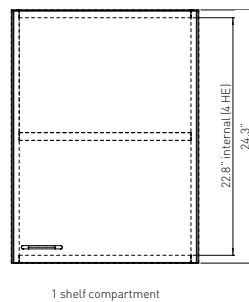
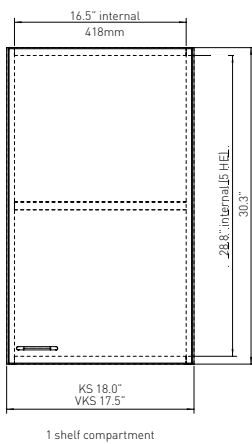
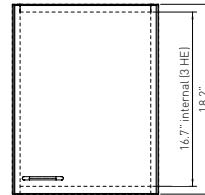
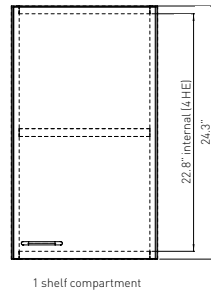
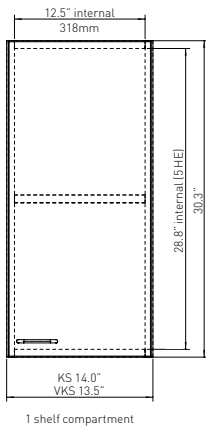
- ▶ open.
- ▶ door in KS.
- ▶ door in VKS.
- ▶ aluminum glass-framed door (ESG glass).
- ▶ aluminum and plastic rolling tambour doors.

We can also supply wall units with shelf compartments on stainless steel shelf support rails. All wall units in ISO 618 with shelf compartments.

We can also plan top mounted cabinets as cabinets with shelf compartments individually for you to suit the specified room height.

As an option, we can also plan, supply and install our own aluminum rail system ladder.

Top mounted cabinets.



Cabinet units 4: ISO top mounted cabinets

Available in wood (KS) and plastic (VKS) in ISO systems
ISO 318, ISO 418 or ISO 618 or after adjustment to the room
height.

Designed to be equipped with ISO modules

- ▶ support walls.
- ▶ shelf compartment on shelf supports.

Available in versions

- ▶ open.
- ▶ door in KS or VKS.
- ▶ glass-framed door.
- ▶ can be supplied with a variety of locking systems.

Top mounted cabinets in ISO 618 are also available with two
doors.

Railing front (1 HE) recommended.